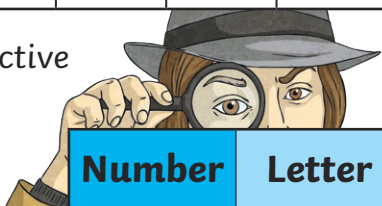


# World Book Day Jokes Code Breaker Activity

To find the answers to these hilarious World Book Day jokes, solve the calculations to break the code by matching the answers to the corresponding letter.

<b>A</b>	<b>B</b>	<b>C</b>	<b>D</b>	<b>E</b>	<b>F</b>	<b>G</b>	<b>H</b>	<b>I</b>	<b>J</b>	<b>K</b>	<b>L</b>	<b>M</b>
456	1022	145	53 889	646	64	468	27	7353	418	18 473	57	3071
<b>N</b>	<b>O</b>	<b>P</b>	<b>Q</b>	<b>R</b>	<b>S</b>	<b>T</b>	<b>U</b>	<b>V</b>	<b>W</b>	<b>X</b>	<b>Y</b>	<b>Z</b>
676	9875	564	23 567	345	82	672	49	6754	654	56 467	63	7843

What did the detective say to the book?



	Number	Letter
$14\ 706 \div 2 =$		
$38 \times 12 =$		
$485 + 2586 =$		
$4900 \div 100 =$		
$1570 - 894 =$		
$17\ 963 \times 3 =$		
$1938 \div 3 =$		
$\frac{1}{2}$ of 690		
$2030 \div 14 =$		
$6584 + 3291 =$		
$16\ 439 - 9685 =$		
$38 \times 17 =$		
$97\ 197 - 96\ 852 =$		

What did the frog say when it went to the library?

	Number	Letter
$34\ 500 \div 100 =$		
$\frac{1}{2}$ of 1292		
$49\ 400 + 4489 =$		
$60\ 000 - 6111 =$		
$2568 + 4785 =$		
$6720 \div 10 =$		
$15 \times 23 =$		
$99\ 193 - 98\ 547 =$		
$40\ 000 + 13\ 889 =$		
$12\ 874 + 41\ 015 =$		
$93\ 013 - 85\ 660 =$		
$12 \times 56 =$		

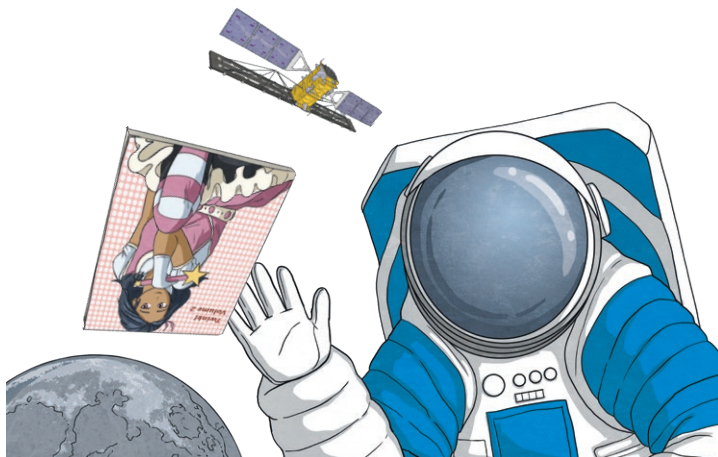


# World Book Day Maths Code Breaker Activity

<b>A</b>	<b>B</b>	<b>C</b>	<b>D</b>	<b>E</b>	<b>F</b>	<b>G</b>	<b>H</b>	<b>I</b>	<b>J</b>	<b>K</b>	<b>L</b>	<b>M</b>
844	24	56 733	37	89 367	72	832	12	500	989	42	12 456	100
<b>N</b>	<b>O</b>	<b>P</b>	<b>Q</b>	<b>R</b>	<b>S</b>	<b>T</b>	<b>U</b>	<b>V</b>	<b>W</b>	<b>X</b>	<b>Y</b>	<b>Z</b>
36 478	321	1004	784	18	54	250	321	420	360	21 563	60 200	21

What do astronauts like to read?

	Number	Letter
$57\,733 - 1000 =$		
$10\,177 - 9856 =$		
$2500 \div 25 =$		
$90\,823 - 1456 =$		
$\frac{1}{4}$ of 1000 =		
$\frac{3}{4}$ of 32 =		
$3852 \div 12 =$		
$107 \times 3 =$		
$\frac{2}{4}$ of 84 =		
$702 \div 13 =$		



Why should you not write a book on a penguin?

	Number	Letter
$994 + 10 =$		
$26\,333 - 25\,489 =$		
$10\,040 \div 10 =$		
$43\,471 + 45\,896 =$		
$180 \div 10 =$		
$\frac{4}{6}$ of 750		
$756 \div 14 =$		
$35\,153 + 54\,214 =$		
$7856 - 7012 =$		
$216 \div 4 =$		
$25 \times 20 =$		
$83\,946 + 5421 =$		
$450 \div 25 =$		

